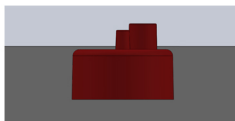


Quick guide



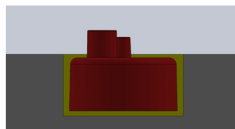
Installation

Version 1 - straight into the fresh screed



After applying the screed, press the **easylogger** with your fingers into the still soft/liquid screed until the **easylogger** is just below the top edge of the screed (see picture).

Version 2 - belated gluing



Drill, with a 35mm drill, an approximately 18mm deep hole into the subsurface and glue the **easylogger** into the borehole with filler or floor adhesive (see picture).

In order to find the device more easily afterwards, the enclosed flag can be used. After placing the **easylogger** on the surface of the screed, insert the enclosed flag into the smaller hole on the top.



floor protector.

Safe from the ground up.



floor protector.

Safe from the ground up.

Product description

The **easylogger** is a temperature (°C) and humidity measuring device (%RH), on which long-term data records of these measured values are saved. The device is positioned on the screed surface.

With the **easylogger**, the room climate can be measured directly on the screed-surface during the screed drying and the associated diagram can be displayed.

The data can be read out contactless via radio connection with synchronization using a mobile phone or a PC.

The device can be read out up to five times.

App

Read out the **easylogger** is possible with an own APP, called "**easylogger**", which is available for Android and Apple-Smartphones in the respective store (Apple-AppStore or Android-PlayStore).

Instructions and further information can be found in the App or on our website (www.floorprotector.at) using the following QR code:



Hints

- Always store unassembled easyloggers in the original packaging in a frost-proof and dry place
- Protect from direct sunlight
- Do not built in damaged devices
- Do not open or modify the device
- Never keep next to magnetic fields

Certification information

a) User Information gem. FCC 15.21 enthalten: Changes or modifications not expressly approved by the party responsible for compliance could void the user's authority to operate the equipment.

b) Part 15 Statement gem. FCC 15.19 falls das Statement nicht auf dem Gerät steht, weil dieses kleiner als eine Handfläche ist) This device complies with Part 15 of the FCC Rules. Operation is subject to the following two conditions:

- (1) This device may not cause interference.
- (2) This device must accept any interference, including interference that may cause undesired operation of the device.

c) Statement gem. RSS GEN Issue 5: This device contains licence-exempt transmitter(s)/receiver(s) that comply with Innovation, Science and Economic Development Canada's licence-exempt RSS(s). Operation is subject to the following two conditions:

- (1) This device may not cause interference
- (2) This device must accept any interference, including interference that may cause undesired operation of the device.

Cet appareil contient des émetteurs / récepteurs exemptés de licence conformes aux RSS (RSS) d'Innovation, Sciences et Développement économique Canada. Le fonctionnement est soumis aux deux conditions suivantes: (1) Cet appareil ne doit pas causer d'interférences (2) Cet appareil doit accepter toutes les interférences, y compris celles susceptibles de provoquer un fonctionnement indésirable de l'appareil.



fp floor protector GmbH
Waldgasse 2
A-2700 Wr. Neustadt



floor protector.

Safe from the ground up.



floor protector.

Safe from the ground up.